

Service Technical Information

MODEL NO.	AM-F5 / F7 / F70 / F65
SUBJECT	Adjustment procedures of OWH(Over Write Head) position

REF.No. :G - 99 - 049 - E0

DATE :02. NOV. 1999

<CONTENTS>

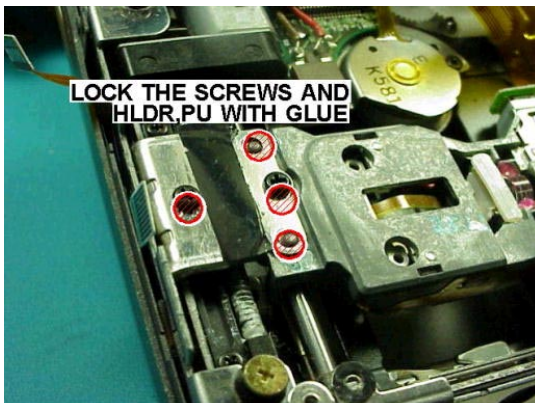
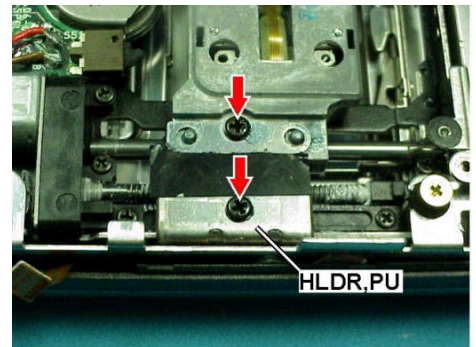
The unit become incapable of playing back recorded disc due to off alignment of HLDR,PU position.

Take the following countermeasure the OWH position.

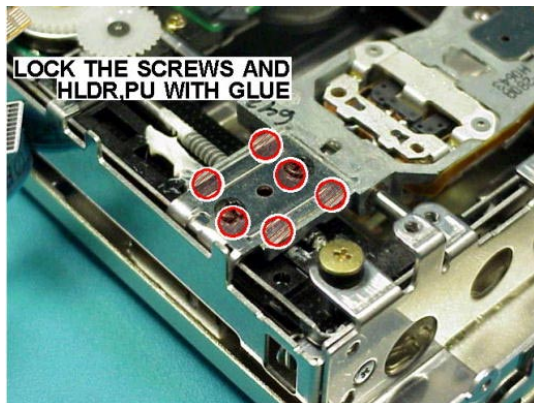
<COUNTERMEASURE>

Adjust the head alignment of OWH by following the steps below:

1. Connect an oscilloscope unit to the "RF" test point .
2. Loosen the two screws on HLDR,PU.
3. Insert an MO disc and operate the system in REC mode.
4. Adjust position of OWH so that RF waveform becomes max and clearest, and then re-tighten the screws.
 - *In REC mode operation, the unit reads and writes alternately (intermittent operations). RF waveform can be verified during data reading operation.
5. Verify recording and playback error rate (Refer to S/M for details).
 - a. Activate test mode.
 - b. Place HOLD SW to OFF position and then insert an MO disc.
 - c. Press F SKIP to move pickup toward the rim of a disc.
 - d. Press VOL- key to lower OWH.
 - e. Press REC, PLAY, MODE, and then REC keys in that order. Recording begins automatically from 600c.
 - f. After recording operation of approximately 15 seconds, press STOP key. (The unit automatically returns to a position around 600c.)
 - g. Press VOL+ key to raise OWH.
 - h. Press PLAY, MODE, and DISP key in that order to display error rate. Check that indicated value is "e**0030" or lower.
6. After alignment, lock the screws HLDR,PU withglue. (1401B). (AM-F5/F7: 4 points, AM-F70/F65: 6 points)



AM-F5 / F7



AM-F70 / F65

G	R	Code No.	Access Code	Modified Ser. No.	Parts Schedule
-	-	-	-	-	-